



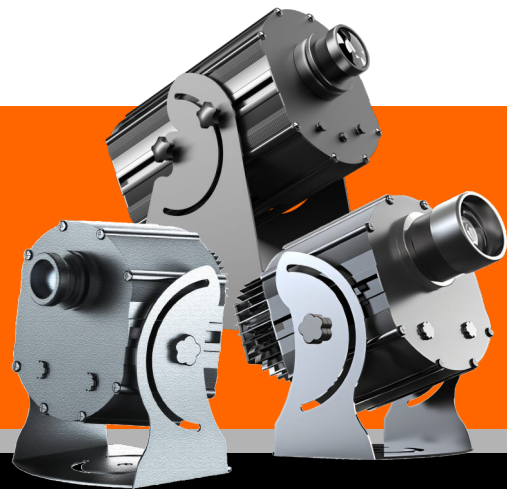
# 8 PATTERN STATIC LOGO PROJECTOR

**A COMPLETE GUIDE PRODUCT CATALOG**

[www.InfinityProjectors.com](http://www.InfinityProjectors.com)

# 8 PATTERN STATIC LOGO PROJECTOR

JOIN THE GOBO REVOLUTION!



## KEY FEATURES



UP TO  
**50,000**  
HOURS OF USE



FREE  
**REMOTE**  
CONTROL



LOGO  
**STATIC/SPIN**  
MODE



FREE  
**8 GOBOS**  
FOR EVERY PROJECTORS



EASY  
**SETUP**  
INSTALLATION



FREE  
**SHIPPING**

## KEY PERFORMANCES



**80W - 700W**  
WATTAGE  
Illumination Power



**1:0.33 DEFAULT LENS**  
AVAILABLE **1:0.5 - 1:1 LENS**  
for 80W Projectors or Higher



**4K HD**  
PREMIUM QUALITY  
Projection

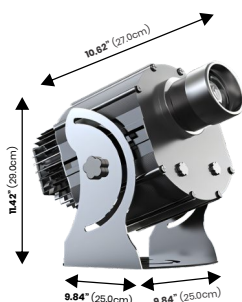


**IP67**  
WATERPROOF  
Outdoor Projectors

# 8 PATTERN STATIC LOGO PROJECTORS

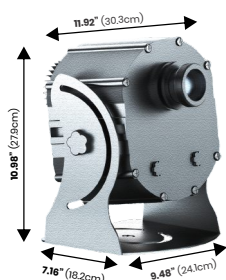


## PRODUCTS SPECIFICATIONS



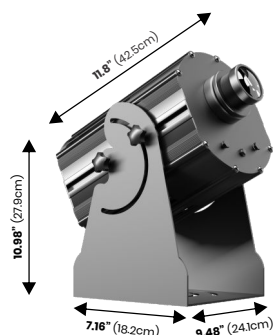
### 80W - 150W

	80 WATT	100 WATT	130 WATT	150 WATT
Lumens (Lm)	8000	10000	13000	15000
Dimension (cm)	29x27x25x25	29x27x25x25	29x27x25x25	29x27x25x25
Weight (Kg)	12 kg	12 kg	12 kg	12 kg
Waterproof	IP 65	IP 65	IP 65	IP 65
<b>Projection Distance</b>				
Dark Setting (ft)	10 - 13	16 - 20	23 - 26	29 - 33
Normal Setting (ft)	6 - 10	10 - 16	16 - 23	20 - 29
Very Bright Setting (ft)	0 - 6	0 - 10	0 - 16	0 - 20



### 150W - 300W

	150 WATT	200 WATT	300 WATT
Lumens (Lm)	15000	20000	30000
Dimension (cm)	30x28x24x18	29x27x25x25	29x27x25x25
Weight (Kg)	20	20	20
Waterproof	IP 65	IP 65	IP 65
<b>Projection Distance</b>			
Dark Setting (ft)	29 - 33	30 - 50	65 - 100
Normal Setting (ft)	20 - 29	23 - 30	30 - 65
Very Bright Setting (ft)	0 - 20	0 - 23	0 - 30



### 400W - 700W

	400 WATT	500 WATT	600 WATT	600 WATT
Lumens (Lm)	40000	50000	60000	66000
Dimension (cm)	42.5x28x18x24	42.5x28x18x24	42.5x28x18x24	42.5x28x18x24
Weight (Kg)	22.5	22.5	22.5	22.5
Waterproof	IP 65	IP 65	IP 65	IP 65
<b>Projection Distance</b>				
Dark Setting (ft)	65 - 100	65 - 100	100 - 160	165 - 200
Normal Setting (ft)	30 - 65	50 - 65	65 - 100	100 - 165
Very Bright Setting (ft)	0 - 30	0 - 50	0 - 65	0 - 100

OTHER SPECIFICATIONS	DETAILS
Light Source	Osram LED High Power
Light Color	Warm White
Color Temperature	8000-8500K (Default 8500K)
Color Rendering Index(Ra)	85
Input VoltageL AC	AC 24-36V , 50Hz-60Hz
Shell Material	Alumunium Alloy
Lens type	Constant Current Power Supply
Power supply	Large Copper Pipe Dual-Row 90 Turbo Fan
Cooling system	Aluminum Radiator
<b>Mode Selection</b>	<b>Static</b>
Standard Lens	1 : 0.33
Alternate Lens	1 : 0.2   1 : 0.65   1:1

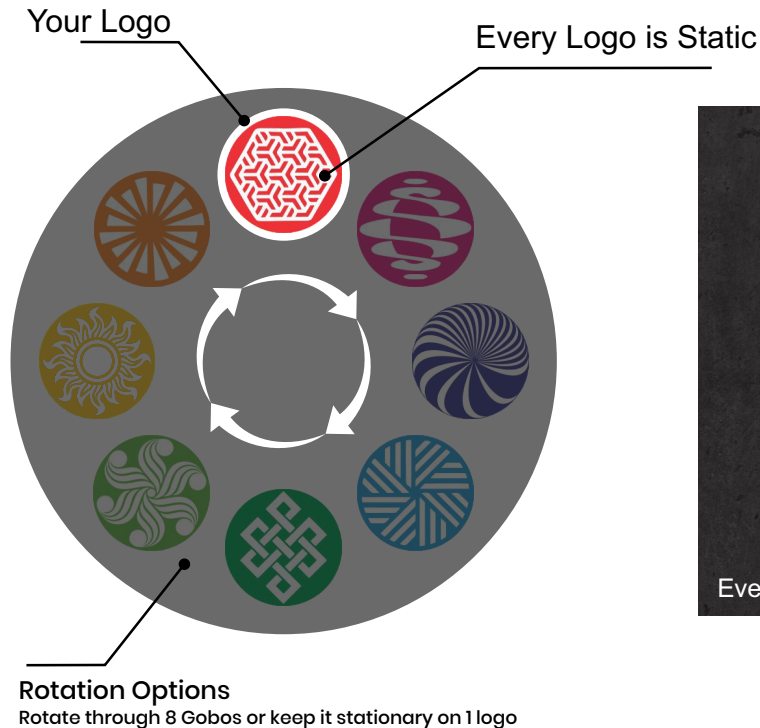


# 8 PATTERN STATIC

## LOGO PROJECTORS



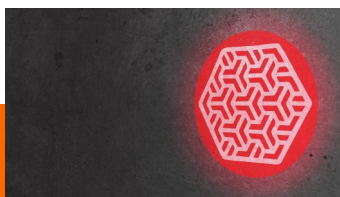
## HOW DOES AN 8 PATTERN STATIC PROJECTOR WORK?



[View Video](#)  
**8 PATTERN STATIC**

### LOGO PROJECTION

#### ROTATE THROUGH 8 GOBOS



Projection 1



Projection 2



Projection 3



Projection 4



Projection 5



Projection 6



Projection 7



Projection 8

# 8 PATTERN STATIC LOGO PROJECTORS



## CHOOSE THE RIGHT WATTAGE



### DARK SETTING

Installation Distance (ft)	6'	10'	13'	16'	20'	23'	26'	29'	33'	35'-50'	50'-65'	65'-100'	100'-165'	165'-200'	200'-328'	328'-656'
Recommended Wattage (W)	15W	25W	35W	50W	60W	80W	100W	100W	150W	200W	300W	500W	700W	800W	1000W	1500W



### NORMAL LIGHT

Installation Distance (ft)	6'	10'	13'	16'	20'	23'	26'	29'	33'	35'-50'	50'-65'	65'-100'	100'-165'	165'-200'	200'-328'	328'-656'
Recommended Wattage (W)	25W	35W	50W	60W	80W	100W	150W	200W	300W	500W	700W	800W	1000W	1000W	1500W	-

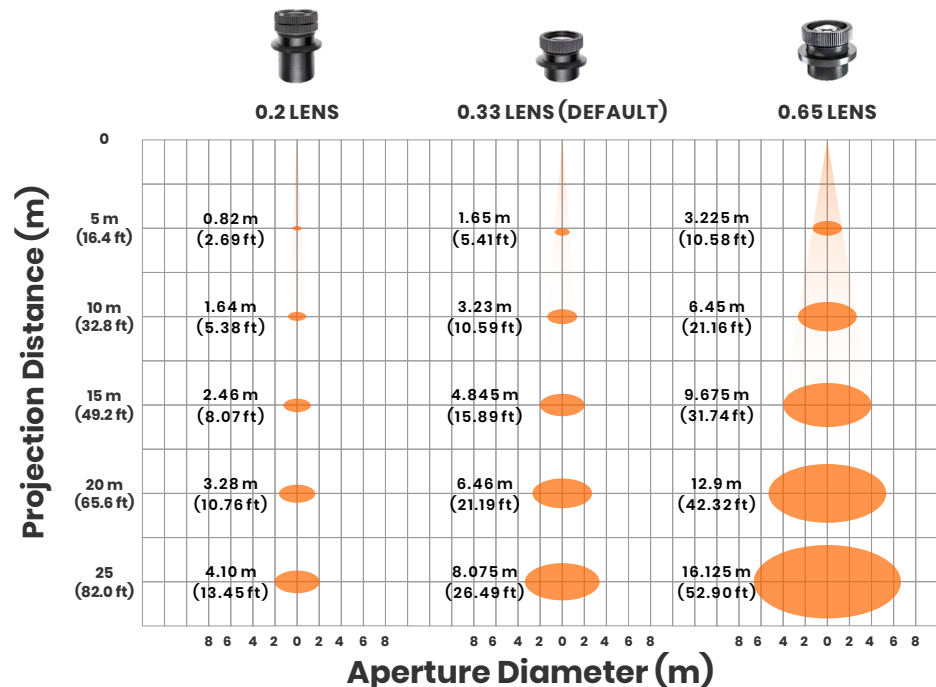


### VERY BRIGHT LIGHT

Installation Distance (ft)	6'	10'	13'	16'	20'	23'	26'	29'	33'	35'-50'	50'-65'	65'-100'	100'-165'	165'-200'	200'-328'	328'-656'
Recommended Wattage (W)	35W	50W	60W	80W	100W	150W	200W	300W	500W	700W	800W	1000W	1500W	1500W	-	-

Check out more information on [choosing the right wattages for your gobo projector.](#)

## CHOOSE THE RIGHT LENSES



Check out more information on [choosing the right lenses for your gobo projector.](#)

# 8 PATTERN STATIC LOGO PROJECTORS



## INSTALLATION MANUAL

### IMPORTANT NOTES BEFORE USE



**To ensure a sharp and clear projection, follow these steps to adjust the focus:**

- The product uses a zoom imaging system.
- After receiving the projector, adjust the focus as needed.
- Turn the lens at the front of the projector (a label on the lens indicates adjustment).
- Rotate the lens outward or inward until the logo projection is sharp.

**Important:**

- For shorter projection distances, rotate the lens outward.
- For longer projection distances, rotate the lens inward.

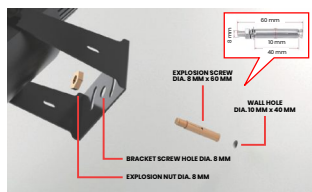


**Tighten All Waterproof Bolt**

To prevent the water entering the chassis. Tighten all the bolt to ensure the waterproof seal are attach perfectly and cover the chassis.

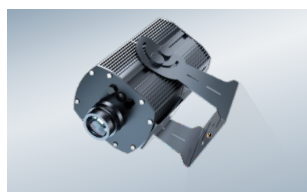
Remote control function also available, it can control the logo to spin or static, and turn on and off the projector light.

### PROJECTOR INSTALLATION



**PREPARATION**

1. Drill screw holes in the positions to be installed
2. Put the explosion screw into the punched hole first
3. Align the screw hole of the machine base bracket into the threaded end of explosion screw.



**INSTALLATION**

Screw the nut into the thread at the end of the explosion screw until it is tightened and the installation is completed.

### REPLACING GOBO METHOD



**STEP 1**

Screw out all the screws of the front cover of the projectors.



**STEP 2**

Take out the spring on the GOBO and then take out all the GOBOS. Or only the GOBOS you want to change.

**Note:** a little soft glue will be applied to install the gobo that you received, and no glue is needed when replave or reinstall gobo. only the spring is needed to clamp the gobo.



**STEP 3**

- Take the gobo out and replace with new gobo
- Make sure the new gobo are clean from dust and other particles
- Insert the new gobo, Ensuring the "REVERSE SIDE" is facing up.
- Secure it with the snap ring.



**STEP 2**

Take out the spring on the GOBO and then take out the GOBO

**Note:** a little soft glue will be applied to install the gobo that you received, and no glue is needed when replave or reinstall gobo. only the spring is needed to clamp the gobo.



FRONT SIDE



REVERSE SIDE

# 8 PATTERN STATIC LOGO PROJECTORS



**FREE!**

**4 PCS ONE-COLOR GOBO**



**FREE!**

**4 PCS FULL-COLOR GOBO**

## ONE-COLOR GOBO COLOR SWATCH

Our standard one-color gobos come in a variety of swatches for direct selection.

LIGHT GREEN	DARK GREEN	GRASS GREEN	LIGHT BLUE
SKY BLUE	MEDIUM BLUE	BLUE	VIOLET BLUE
PURPLE	FUSCHIA	LIGHT PINK	PINK
RED	DARK RED	ORANGE RED	ORANGE
LIGHT ORANGE	YELLOW	COFFEE RED	BROWN
	BLACK	LIGHT GREY	

## ONE-COLOR GOBO BASED ON COLOR SWATCH



## FULL-COLOR GOBO FREE COLOR OF YOUR LOGO



**Note:** Art requiring a different shade of the color available in our swatch is considered a **full color** gobo

[View Stock Gobo](#)

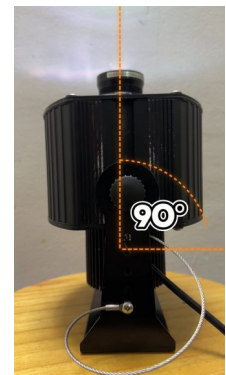
## INSTALLATION GUIDE

### PROJECTOR LENSES



[View Video](#)

### PROJECTION ANGLES



[View Video](#)





# VISIT OUR BLOG FOR MORE INSPIRATION & INFORMATION



## A COMPLETE GUIDE TO BUYING LOGO PROJECTORS

Choosing the right logo projector is crucial for delivering crisp, impactful projections, whether for branding, safety, or creative displays.

[Visit Blog](#)

## STATIC VS SPIN LOGO FOR YOUR BUSINESS

The choice between a spin or static 4 Gobo projector is about matching functionality with objective. What will you choose to amplify your business's voice?

[Visit Blog](#)

## PROJECTION ANGLE & LENS GUIDE

We are here to guide you through selecting the ideal lens for your projector needs, ensuring the perfect projection size for your setting.

[Visit Blog](#)

## BLACK COLOR IN CUSTOM GOBO ART: RULES, EXAMPLES, AND DESIGN TIPS

Black behaves differently than other colors—it blocks light, causing it to not project. This guide will explain when black works, when it doesn't, how to handle black in logos, and tips for designing gobos that project clearly and beautifully.

[Visit Blog](#)