



# EMBEDDED LOGO PROJECTOR FOR SLEEK BRANDING

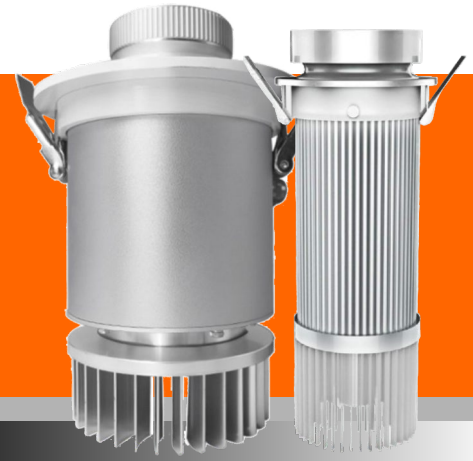
**A COMPLETE GUIDE PRODUCT CATALOG**

[www.InfinityProjectors.com](http://www.InfinityProjectors.com)

# EMBEDDED LOGO PROJECTOR

## FOR SLEEK BRANDING

JOIN THE GOBO REVOLUTION!



### KEY FEATURES

ROTARY  
ZOOM LENS

LOCK CLIP

ALLUMUNIUM  
ALLOY

COOLING  
ELEMENT

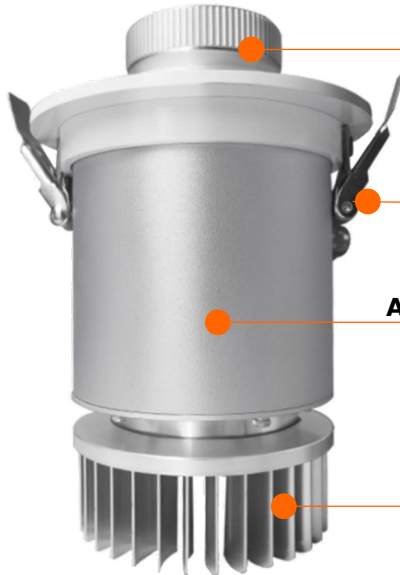


ROTARY  
ZOOM LENS

LOCK CLIP

ALLUMUNIUM  
ALLOY

COOLING  
ELEMENT



FREE  
**2 GOBOS**  
FOR EVERY PROJECTORS



LOGO  
**STATIC/SPIN**  
MODE



UP TO  
**50,000**  
HOURS OF USE



FREE  
**REMOTE**  
CONTROL



FREE  
**SHIPPING**



EASY  
**SETUP**  
INSTALLATION

### KEY PERFORMANCES



**15W - 100W**  
**WATTAGE**  
Illumination Power



**1:0.33 DEFAULT LENS**  
**1:0.2 | 1:0.3 | 1:0.65**  
Upgradeable Lens Available



**4K HD**  
**PREMIUM QUALITY**  
Projection



**INDOOR**  
**USAGE ONLY**  
Indoor Projectors

# EMBEDDED LOGO PROJECTOR

## FOR SLEEK BRANDING



## PRODUCTS SPECIFICATIONS

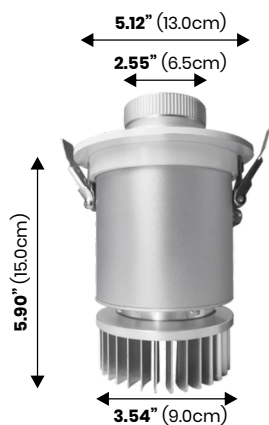


**IP-LQ**  
**STATIC / ROTATE**

**2.86 lbs**  
NET WEIGHT

### 15W - 35W

	15 WATT	25 WATT	35 WATT
Luminaire Flux (Lm)	1000 - 1500	2000 - 2500	3000 - 3500
Dimension (cm)	22.8 x 10 x 10	22.8 x 10 x 10	22.8 x 10 x 10
Weight (Kg)	1.0	1.35	1.45
Waterproof	No	No	No
<b>Projection Distance</b>			
Dark Setting (ft)	1 - 6	6 - 10	6 - 10
Normal Setting (ft)	1 - 3	3 - 6	3 - 6
Very Bright Setting (ft)	0 - 1	0 - 3	0 - 3



**IP-LQ-PDD**  
**ROTATE**

**3.53 lbs**  
NET WEIGHT

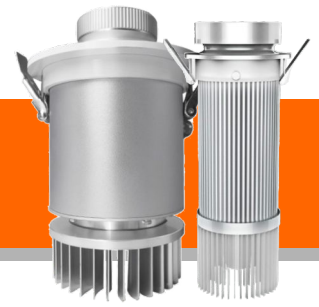
### 15W - 35W

	15 WATT	25 WATT	35 WATT
Luminaire Flux (Lm)	1000 - 1500	2000 - 2500	3000 - 3500
Dimension (cm)	15 x 13 x 9	15 x 13 x 9	15 x 13 x 9
Weight (Kg)	1.3	1.3	1.3
Waterproof	No	No	No
<b>Projection Distance</b>			
Dark Setting (ft)	1 - 6	6 - 10	6 - 13
Normal Setting (ft)	1 - 3	3 - 6	6 - 10
Very Bright Setting (ft)	0 - 1	0 - 3	0 - 6

### 55W - 100W

	55 WATT	80 WATT	100 WATT
Luminaire Flux (Lm)	4000 - 5500	7500 - 8000	9000 - 1000
Dimension (cm)	15 x 13 x 9	15 x 13 x 9	15 x 13 x 9
Weight (Kg)	1.3	1.3	1.3
Waterproof	No	No	No
<b>Projection Distance</b>			
Dark Setting (ft)	10 - 20	13 - 26	16 - 33
Normal Setting (ft)	10 - 13	13 - 20	16 - 26
Very Bright Setting (ft)	0 - 10	0 - 13	0 - 16

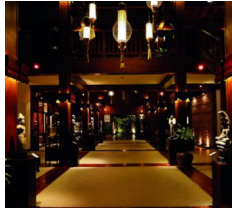
OTHER SPECIFICATIONS	DETAILS
Light Source	Osram LED
Color Temperature	8000 - 8500K (Default 8000K)
Lamp Luminous Efficiency(lm/w)	110
Color Rendering Index(Ra)	85
Input VoltageL AC	AC 24 - 36V ,
Shell Material	Alumunium Alloy
Lens type	-20 ~ 60 °C
Working Temperature	Yufan Power Supply
Cooling system	Aviation Cold Forged Aluminum
<b>Mode Selection</b>	<b>Static / Spin</b>
Standard Lens	1 : 0.33
Alternate Lens	1 : 0.2   1:0.5   1:0.65



# EMBEDDED LOGO PROJECTOR

## FOR SLEEK BRANDING

CHOOSE  
THE  
RIGHT  
WATTAGE



### DARK SETTING

Installation Distance (ft)	6'	10'	13'	16'	20'	23'	26'	29'	33'	35'-50'	50'-65'	65'-100'	100'-165'	165'-200'	200'-328'	328'-656'
Recommended Wattage (W)	15W	25W	35W	55W	55W	80W	100W	100W	150W	200W	300W	500W	600W	800W	1000W	1500W



### NORMAL LIGHT

Installation Distance (ft)	6'	10'	13'	16'	20'	23'	26'	29'	33'	35'-50'	50'-65'	65'-100'	100'-165'	165'-200'	200'-328'	328'-656'
Recommended Wattage (W)	25W	35W	55W	55W	80W	100W	150W	200W	300W	500W	600W	800W	1000W	1000W	1500W	-

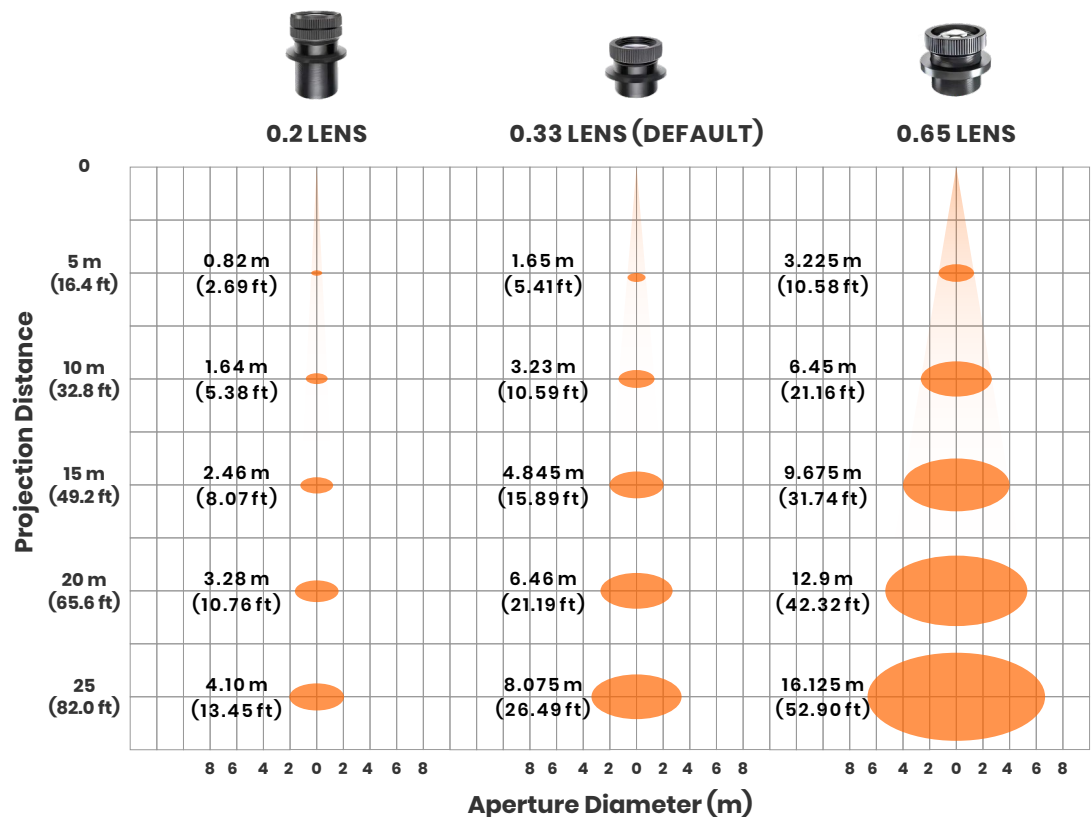


### VERY BRIGHT LIGHT

Installation Distance (ft)	6'	10'	13'	16'	20'	23'	26'	29'	33'	35'-50'	50'-65'	65'-100'	100'-165'	165'-200'	200'-328'	328'-656'
Recommended Wattage (W)	35W	55W	65W	80W	100W	150W	200W	300W	500W	600W	800W	1000W	1500W	1500W	-	-

Check out more information on [choosing the right wattages for your gobo projector.](#)

LENSES  
GUIDE  
TO  
DISTANCE

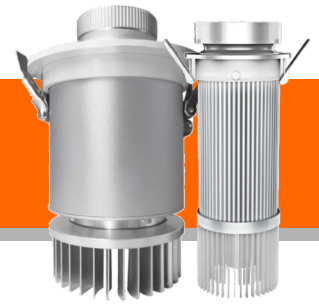


Check out more information on [choosing the right lenses for your gobo projector.](#)



# EMBEDDED LOGO PROJECTOR

## FOR SLEEK BRANDING



# INSTALLATION MANUAL

## IMPORTANT NOTES BEFORE USE

### 1. FOCUSING THE PROJECTION



To ensure a sharp and clear projection, follow these steps to adjust the focus:

- The product uses a zoom imaging system. After receiving the projector, adjust the focus as needed.
- Turn the lens at the front of the projector (a label on the lens indicates adjustment).
- Rotate the lens outward or inward until the logo projection is sharp.

#### Important:

- For shorter projection distances, rotate the lens outward.
- For longer projection distances, rotate the lens inward.

### 2. HANDLING GOBOS



Gobos are made of glass and must be handled with care:

- Inspect the gobo for any damage before installation.
- Refer to Section 3 for detailed gobo replacement instructions.
- Test the gobo projection to ensure proper alignment before final installation.

## PROJECTOR INSTALLATION

### 1. PREPARATION



#### Prepare area for projector placement

Hole Diameter: 7.6cm  
Hole Depth: 19cm

Note: Ensure the hole diameter does not exceed the size of the projector's front cover; otherwise, installation will not be possible.

### 2. INSTALLING THE PROJECTORS



#### Projector Placement

- Flip open the clamps on both sides of the projector.
- Insert the projector into the wall or ceiling hole.
- Adjust the position to ensure the gobo projection aligns perfectly with your desired branding location.
- Once properly aligned, the installation is complete.

## REPLACING GOBO METHOD

### STEP 1



Unscrew all screws from the projector's front cover.

### STEP 2



Carefully remove the snap ring and the gobo.

### STEP 3



Insert the new gobo, Ensuring the "REVERSE SIDE" is facing up. Secure it with the snap ring.



FRONT SIDE



REVERSE SIDE

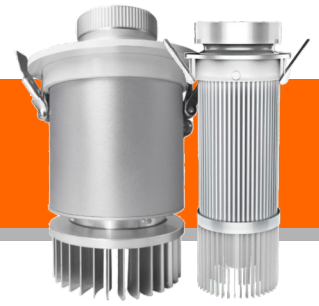
### STEP 4



Reattach the front cover and tighten all screws.  
REPLACEMENT COMPLETE! Enjoy Your New Projector

# EMBEDDED LOGO PROJECTOR

## FOR SLEEK BRANDING



### ONE-COLOR GOBO COLOR SWATCH

Our standard one-color gobos come in a variety of swatches for direct selection.

LIGHT GREEN	DARK GREEN	GRASS GREEN	LIGHT BLUE
SKY BLUE	MEDIUM BLUE	BLUE	VIOLET BLUE
PURPLE	FUSCHIA	LIGHT PINK	PINK
RED	DARK RED	ORANGE RED	ORANGE
LIGHT ORANGE	YELLOW	COFFEE RED	BROWN
	BLACK	LIGHT GREY	



**FREE!**

1 PCS ONE-COLOR GOBO



**FREE!**

1 PCS FULL-COLOR GOBO

**ONE-COLOR GOBO**  
BASED ON COLOR SWATCH



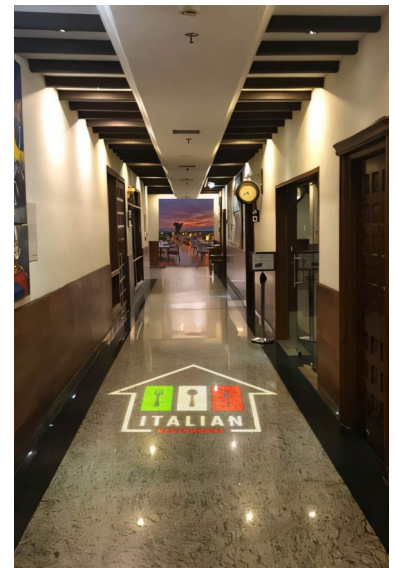
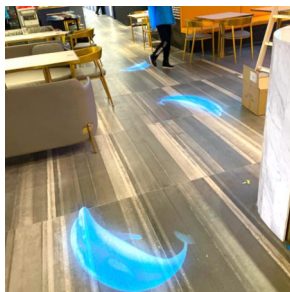
**FULL-COLOR GOBO**  
FREE COLOR OF YOUR LOGO



**Note:** Art requiring a different shade of the color available in our swatch is considered a **full color** gobo

[View Stock Gobo](#)

## PROJECTOR APPLICATION



[View Video](#)

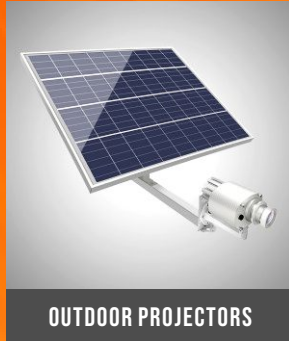
[View Video](#)



VISIT OUR WEBSITE FOR MORE PRODUCT TO LEVEL UP EXPERIENCE



INDOOR PROJECTORS



OUTDOOR PROJECTORS



HIGH WATTAGE PROJECTORS



INTERACTIVE PROJECTORS

VISIT OUR BLOG FOR MORE INSPIRATION & INFORMATION



## A COMPLETE GUIDE TO BUYING LOGO PROJECTORS

Choosing the right logo projector is crucial for delivering crisp, impactful projections, whether for branding, safety, or creative displays.

[Visit Blog](#)



## STATIC VS SPIN LOGO FOR YOUR BUSINESS

The choice between a spin or static 4 Gobo projector is about matching functionality with objective. What will you choose to amplify your business's voice?

[Visit Blog](#)



## PROJECTION ANGLE & LENS GUIDE

We are here to guide you through selecting the ideal lens for your projector needs, ensuring the perfect projection size for your setting.

[Visit Blog](#)



## BLACK COLOR IN CUSTOM GOBO ART: RULES, EXAMPLES, AND DESIGN TIPS

Black behaves differently than other colors—it blocks light, causing it to not project. This guide will explain when black works, when it doesn't, how to handle black in logos, and tips for designing gobos that project clearly and beautifully.

[Visit Blog](#)

[www.InfinityProjectors.com](http://www.InfinityProjectors.com)